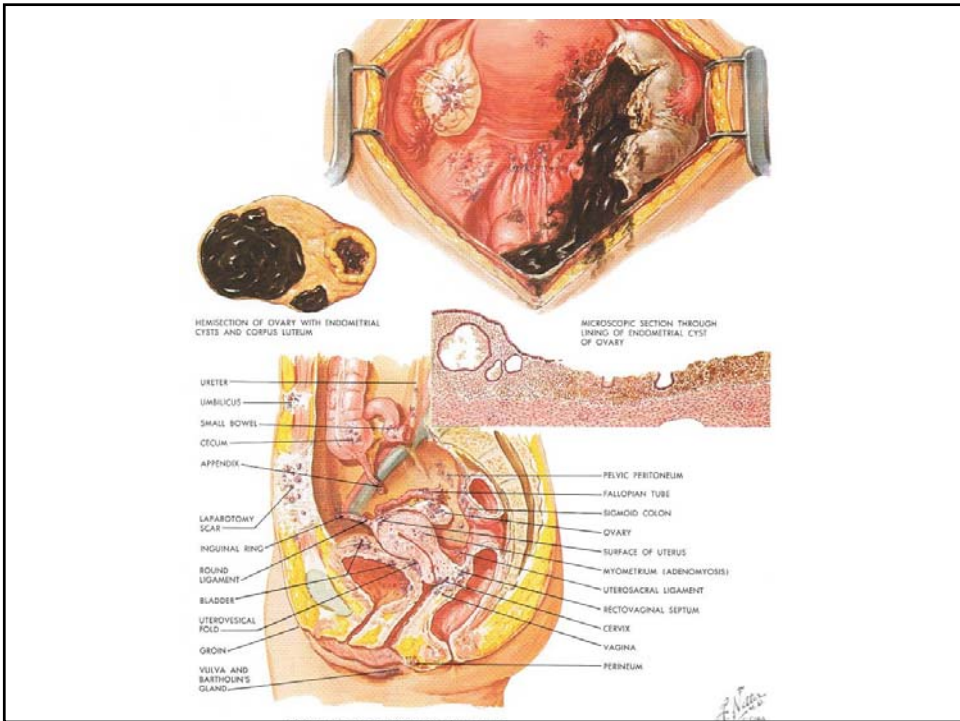
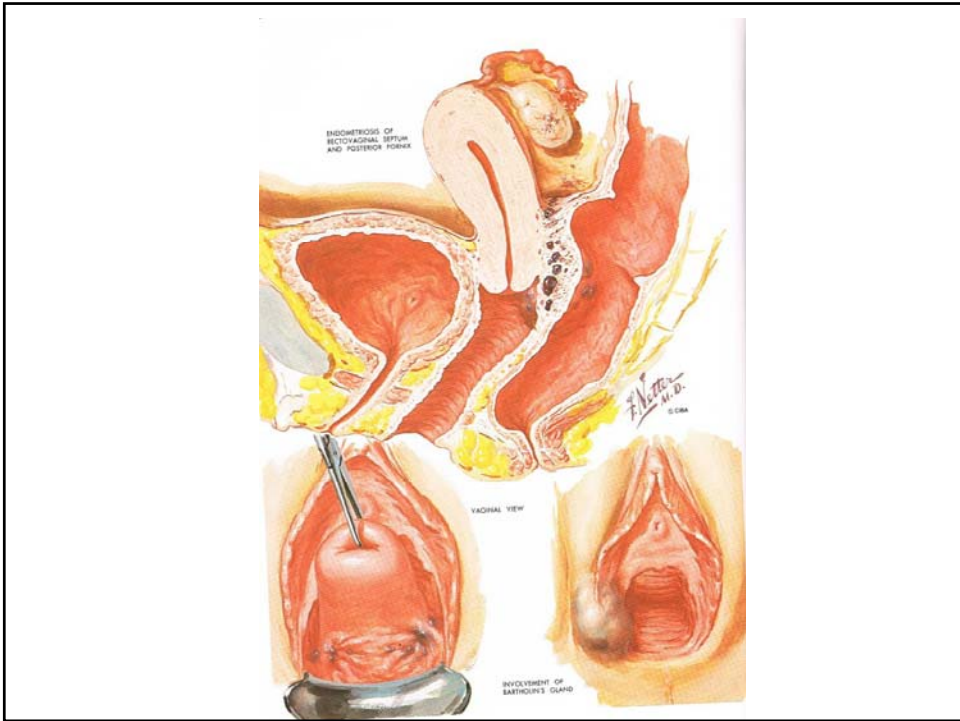


Gynecology

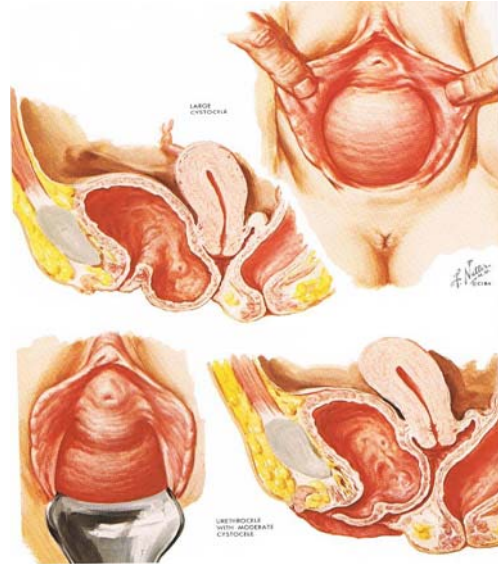
Dr. Thomas Austin, MD, FCOG
Providence Women's Health

Endometriosis

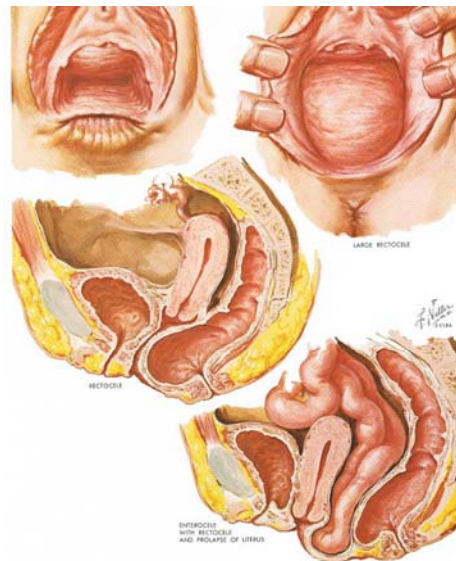
- Ectopic implants of endometrial tissue, i.e. stroma and glands identical to endometrial tissue, present outside the uterine cavity, on the ovary, peritoneum, bowel, etc.
- Endometrioma
- Symptoms, associations
- Diagnosis and staging criteria
- Adenomyosis



Cystocele

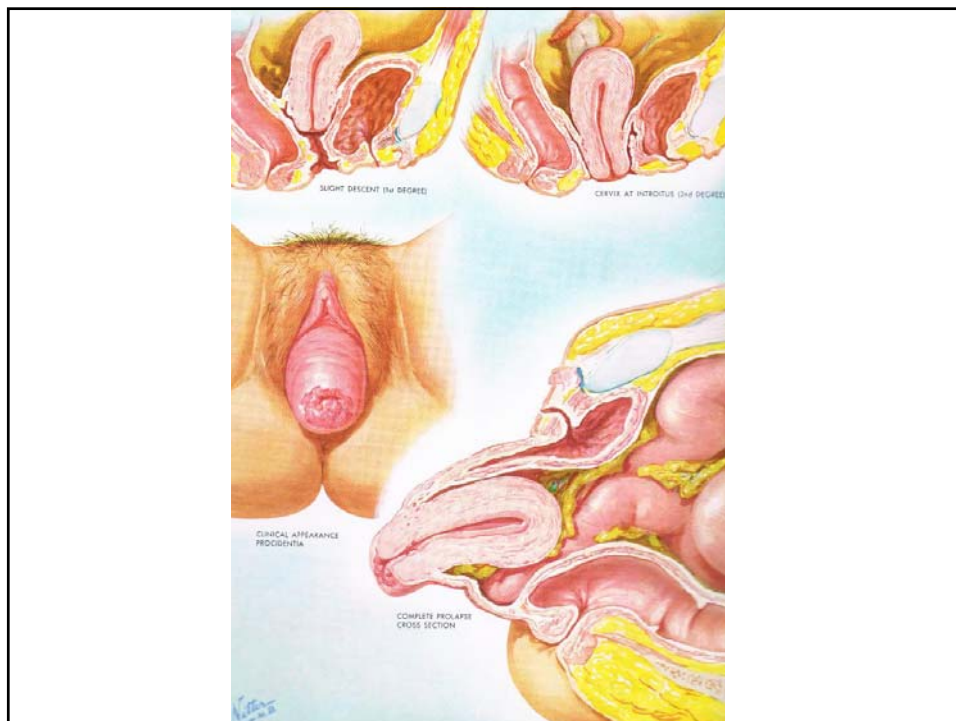


Rectocele



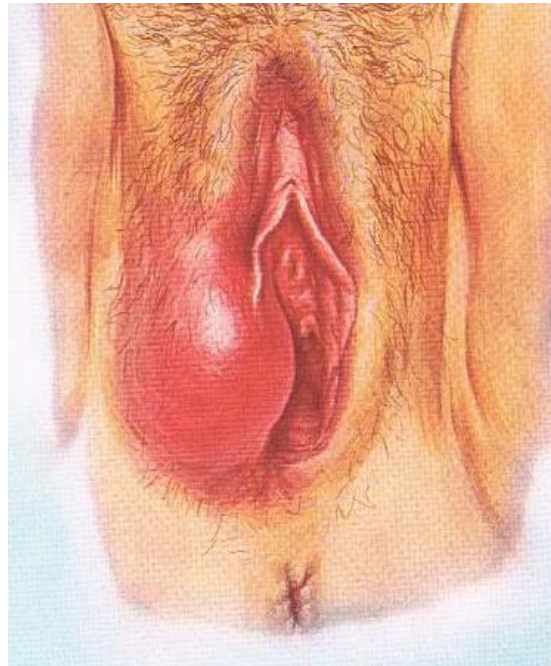
Uterine prolapse

- Symptoms
- Physical findings
- Staging



Bartholin's Duct Cyst

- Etiology
- Physical findings
- Treatment options
 - Word catheter (I&D)
 - Marsupialization



Vaginal vault prolapse

- ASC = gold standard
 - Morbidity
- Multiple vaginal procedures
 - With and without mesh

Urinary incontinence

- Stress
 - Symptoms
 - Physical findings
 - Treatment
- Urge
 - Symptoms
 - Physical findings
 - Treatment

Procedures

- Slings
 - TOT
 - TVT
 - Apogee (posterior)
 - Perigee (anterior)
 - ASC = gold standard
 - Prolift (combined)